

Sonofine EUS B, B2 & B2 Plus

Ultrasound Diagnostic Imaging System



B2 & B2 Plus Features

- 10" SVGA high resolution, non-interlace monitor
- 8 gamma correction and 6 slide TGC control
- 256 frame bidirectional cine loop
- 16 frames permanent image storage
- Supports video and laser printers
- Image transfer via USB port to USB flash disk or PC
- Software packages for obstetrics, gynaecology, urology and cardiology

The Sonofine series is a revolutionary black and white ultrasound diagnostic imaging system. It offers a combination of advanced imaging technologies and outstanding ergonomic design. It features measurement and analysis software packages and powerful functions, making it suitable for abdominal, OB, GYN, urology, cardiology and general scanning applications.



- Reliable diagnosis software packages of obstetrics, gynaecology, urology and cardiology
- Four separated reports for above software can be printed out by video printer or laser printer



B Features

- 10" non-interlace monitor
- Multi frequency probes
- Real time zooming
- Colour coded display
- 206 frame cine loop
- 32 frame permanent image storage
- USB port for image transferring to PC
- Various EFW and standard obstetrical report



Efficient Data Management

- Supports USB flash disk for more image storage and program updates
- Directly connect to PC via USB port for image transferring
- Windows based PC software for image transferring and management



Sonofine EUS B, B2 & B2 Plus

Technical Specifications

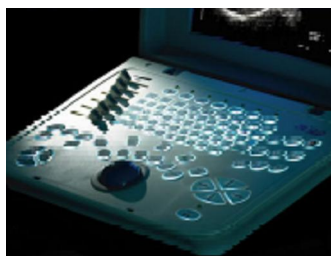
	EUS B	EUS B2	EUS B2 Plus
Image Mode	B, B&M, B&B, M	B, B&M, B&B, M	B, B&M, B&B, M
Grey Scale	256	256	256
Display	10" Non-Interlaced monitor	10" Non-Interlaced monitor	10" Non-Interlaced monitor
Transducer Frequency	2.5—7.5 MHz	2.5—7.5 MHz	2.5—7.5 MHz
Transducer Connector	1 standard, 2 optional	1 standard, 2 optional	1 standard, 2 optional
Electronic Focusing	1—4 focus number selectable	1—4 focus number selectable	1—4 focus number selectable
Scanning Depth	220mm	220mm	220mm
Zoom	4 sector selectable	4 sector selectable	4 sector selectable
Body Mark	15	38	38
Gain Control	2 segment TGC and main control	6 segment TGC and main control	6 segment TGC and main control
Cineloop	206	256	256
Image Storage	32	16	16
Image Processing	20 Channels. Edge enhancement	20 Channels. Edge enhancement	32 Channels. Edge enhancement
	Transitional frame	8 Gamma correction curves Transitional frame	8 Gamma correction curves Transitional frame
	Up/down; left/right/ black white conversion	Up/down; left/right/ black white conversion	Up/down; left/right/ black white conversion
Measurement	Distance, area circumference, volume	Distance, area circumference, volume, angle	Distance, area circumference, volume, angle
	Heart rate, time, EF, interval	Heart rate, time, EF, interval	Heart rate, time, EF, interval
	BPD, CRL, GS, HC, AC, FL, EFW	BPD, CRL, GS, HC, AC, FL, EFW, OFD	BPD, CRL, GS, HC, AC, FL, EFW, OFD
Software Package	Obstetrics	OB/GYN, Urology, Cardiology	OB/GYN, Urology, Cardiology
Comment	Date, time, patient name, sex, age	Date, time, patient name, sex, age	Date, time, patient name, sex, age
	Hospital name, focal combination	Hospital name, focal combination	Hospital name, focal combination
	Frame correction	Frame correction	Frame correction
Peripheral Port	Video port, VGA port, USB port	Video port, USB port, LPT port, RS232	Video port, USB port, LPT port, RS232

Sonofine EUS B, B2 & B2 Plus

Technical Specifications



	EUS B	EUS B2	EUS B2 Plus
Standard Configuration	EUS B main unit	EUS B2 main unit	EUS B2 Plus main unit
	10" non-interlaced monitor	10" non-interlaced monitor	10" non-interlaced monitor
	One transducer connector	One transducer connector	One transducer connector
	206 frame cine loop	256 frame cine loop	256 frame cine loop
	32 frame permanent image storage	16 frame permanent image storage	16 frame permanent image storage
Optional Transducer	Convex transducer C361/60R (2.5/3.5/5.0 MHz)	Convex transducer C080-60G (2.5/3.5/5.0 MHz)	Convex transducer C096-40B (2.5/3.5/5.0 MHz)
	Linear transducer L741 (5.0/7.5 MHz)	Linear transducer L080-57C (5.0/6.5/7.5 MHz)	Convex transducer C128-40B (2.5/3.5/5.0 MHz)
	Transvaginal transducer E611/13R (5.0/6.5 MHz)	Transvaginal transducer C080-13F (5.0/6.5/7.5 MHz)	Linear transducer L096-12B (5.0/6.5/7.5 MHz)
	Endorectal transducer EL1-1 (5.0/7.5 MHz)		Transvaginal transducer C080-13F (5.0/6.5/7.5 MHz)
			Micro convex transducer C096-20B (2.5/3.5/5.0 MHz)
Others	Two transducer connectors	Two transducer connectors	Two transducer connectors
	Trolley	Trolley	Trolley
	Video printer	Video printer, Laser printer	Video printer, Laser printer
	Image upload software via USB	Image upload software via USB	Image upload software via USB
		Foot switch	Foot switch



- Friendly and easy to use
- 10" non interlaced display
- Ergonomic design backlit keyboard



Advanced Transducer Technology

- Multi frequency probes ensure high image quality under different applications
- 80 elements and 20 channel convex probe as standard

